

STATE OF MINNESOTA, } ss.
COUNTY OF MURRAY, }

I hereby certify that the within instrument was filed in this office for record on the 30TH day of AUGUST A.D. 20 19 at 9:00 o'clock A. M. and was duly recorded as Document No. _____

Evelyn C. Larson
County Recorder

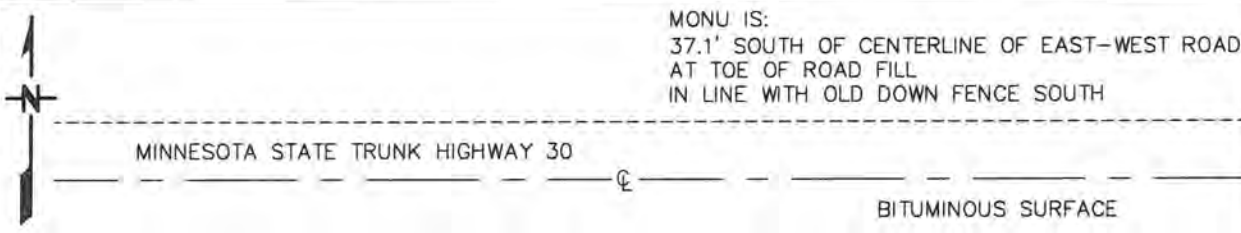
Index No. V-23

CERTIFICATE OF LOCATION OF GOVERNMENT CORNER

NORTH QUARTER Corner of Section 36, Township 107 N, Range 39 W
5TH Principal Meridian, State of Minnesota, County of MURRAY

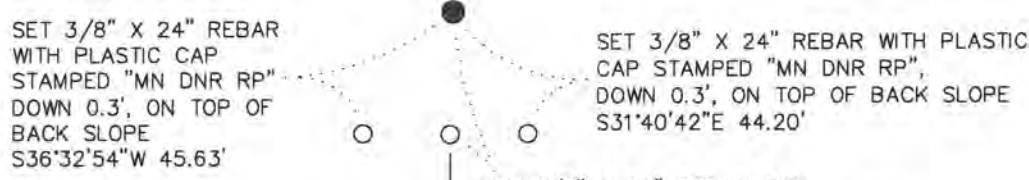
At the corner location shown on the sketch:

- On 10/18/2017 found a PERFORATED STEEL TUBE WITH ALUMINUM CAP STAMPED "DNR SURVEY MARKER", DOWN 0.5'
 - left monument as found,
 - lowered monument,
 - removed monument (explain)
- On _____ Placed a _____
DATE



MONU IS:
37.1' SOUTH OF CENTERLINE OF EAST-WEST ROAD
AT TOE OF ROAD FILL
IN LINE WITH OLD DOWN FENCE SOUTH

MINNESOTA STATE TRUNK HIGHWAY 30
BITUMINOUS SURFACE



MURRAY COUNTY
COORDINATE SYSTEM
NAD 1983 1996 ADJ.
N = 168825.650
E = 577418.725

BEARINGS ARE COUNTY ORIENTATION

Statement of evidence for this corner location is on back of this page. APRIL 2018 WMA00745

I hereby certify that this plan, specification, or report was prepared by me or under my direct supervision and that I am a duly Licensed Land Surveyor under the laws of the State of Minnesota.

SIGNATURE Bruce W. Sheppard DATE 8/15/19 License Number 17003
BRUCE W. SHEPPARD

North Quarter Corner of Section 36, Township 107 North, Range 39 West

For additional information see:

1985 November, Lowell R. Pommerening Jr., PLS 17005, with the Minnesota Department of Natural Resources filed a Certificate of Location of Government Corner for this corner in the Murray County Recorder's Office.

The DNR Division of Lands and Minerals contacted the following for survey information:

Website - mngeo.state.mn.us for GLO plat and field notes

Website - murray-countymn.com for section and quarter section corner information

Murray County Recorder's Office

Zieske Land Surveying, Inc. of Windom

1861 U.S. General Land Office notes, obtained from mngeo.state.mn.us, show the corner marked with a wood post set in mound of earth with pits and trench dug around the mound. Also, planted Alder seed between the four pits and trenches.

2017 October 18, the DNR Division of Lands and Minerals visited the area of the corner and found an aluminum cap stamped "D.N.R. SURVEY MARKER" on a perforated steel tube, down 0.5 of a foot. The aluminum capped perforated steel tube was found to be:
2629.95 feet from the northeast corner of Section 36
at the toe of a fill section on the south side of State Highway 30
in line with an old down fence south

Analysis of the above information led the DNR Division of Lands and Minerals to conclude that the found aluminum cap stamped "D.N.R. SURVEY MARKER" on a perforated steel tube, which was set over a concrete monument in 1985, marks the location of the corner. Searched for but found no evidence of the record ties.